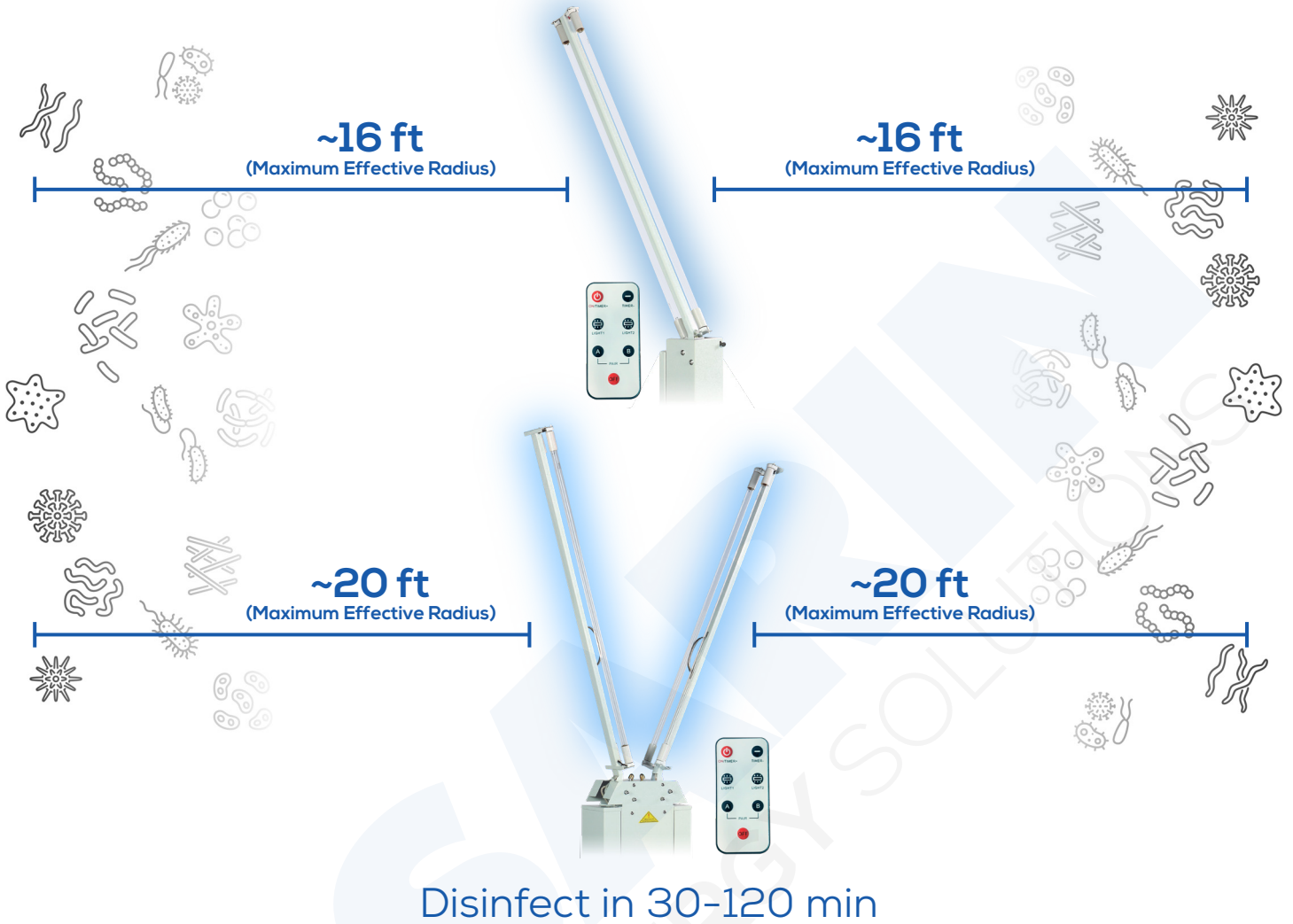




Mobile UVC Sterilizer Units

Portable 253.7 nm Ultraviolet Disinfection
Kills Viruses, Bacteria, Fungi & More

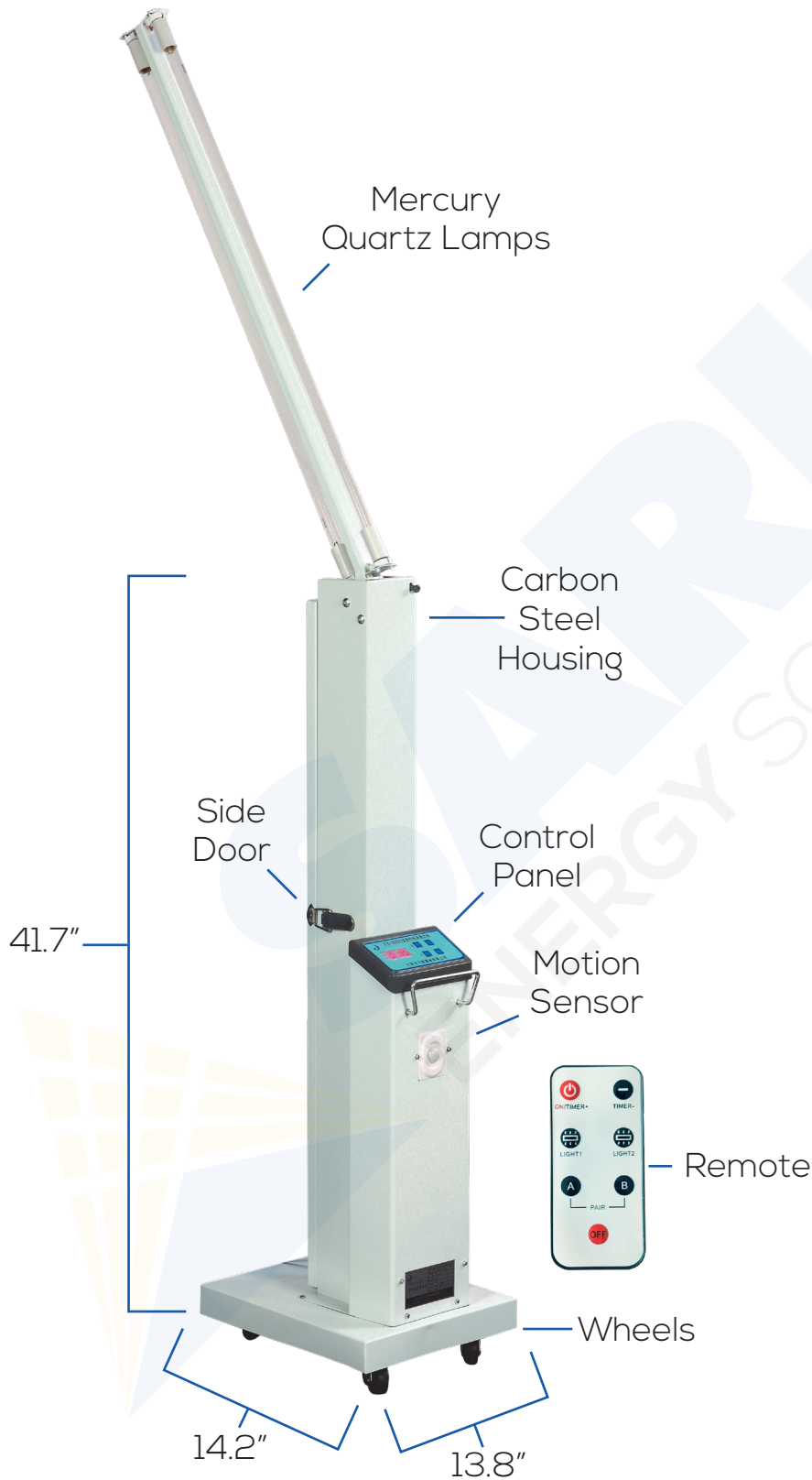
Mobile UVC Sterilizer Units



The Centers for Disease Control and Prevention (CDC) recommends a UV lamp intensity of **40 $\mu\text{W}/\text{cm}^2$** at the center of the work area to ensure surface decontamination.

Mobile UVC Sterilizer Unit

#10998 SES-UVCMOBI-60



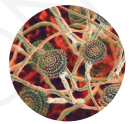
UVC Kills



Viruses



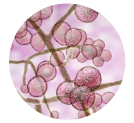
Bacteria



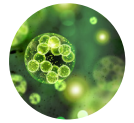
Fungi



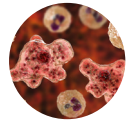
Mold



Yeast



Algae



Amoebas



Allergens

FEATURES

1. Clinically proven to eliminate 99.9% of all viruses, bacteria, fungi, mold, yeast, algae, amoebas, and other germs and allergens within seconds of 253.7 nm UVC exposure.
2. Can be programmed and set with panel or remote control.
3. A motion sensor deactivates the lamp when it detects movement within 16 feet.
4. Arm can be folded out of protective shell and adjusted to various angles.
5. Contact-free disinfection reduces the chance of human error and cross-contamination.
6. Reduces the need to buy and handle corrosive cleaners. (Does not replace soap/water)

SPECIFICATIONS

Model:	Mobile UVC Sterilizer Unit
Size:	41.7"(L) x 13.8"(W) x 14.2"(D) 20.8 lbs
Power:	110W
Voltage:	AC110V
UV Strength:	$\geq 296 \mu\text{W}/\text{cm}^2$ (at 3.5 ft)
Effective Range:	~1,000 ft ²
UVC Wavelength:	253.7 nm
UVC Lamp:	Mercury Quartz
Bonus Features:	Motion Detector, Remote
Bulb Lifespan:	$\geq 6,000$ hours
Remote Range:	100 ft

TIPS & SAFETY

- To maximize effectiveness, ensure the room to be disinfected is clear of debris
- Take care to avoid direct or prolonged exposure of UVC to skin and eyes
- Keep out of reach of children and pets, do not leave unattended while not in use
- Clear area of people, plants and animals
- Can be used near food, tests have not shown any loss in quality or nutrition
- Angle the arm for maximum exposure
- If the lamp breaks use a wet paper towel to clean up, and do not inhale
- As distance from a subject is increased, exposure time should be prolonged



INSTRUCTIONS

Ensure that the base is attached, open the side door and lift the lamp arm to your desired angle. Then plug the cord into an outlet and ensure the area is clear of people and debris.

Area	Disinfect Time
~500 ft ²	30 minutes
~750 ft ²	60 minutes
~1,000 ft ²	120 minutes

*Exposure time can be extended past 120 min to increase the kill rate from 99.9% to ~99.999%.

Press the 'ON' button and set the timer between 0-1440 minutes.

This model is ideal for more populated areas and can easily be operated by a novice. There is a delay once it is turned on, so it will not activate until the sensor does not detect anyone. If a person or small animal enters its range it will deactivate the unit temporarily until they leave.

Mobile UVC Sterilizer Unit XL

#10999 SES-UVCMOBI-220

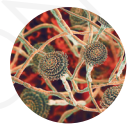
UVC Kills



Viruses



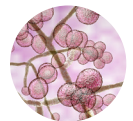
Bacteria



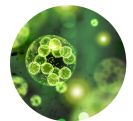
Fungi



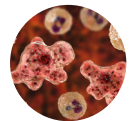
Mold



Yeast



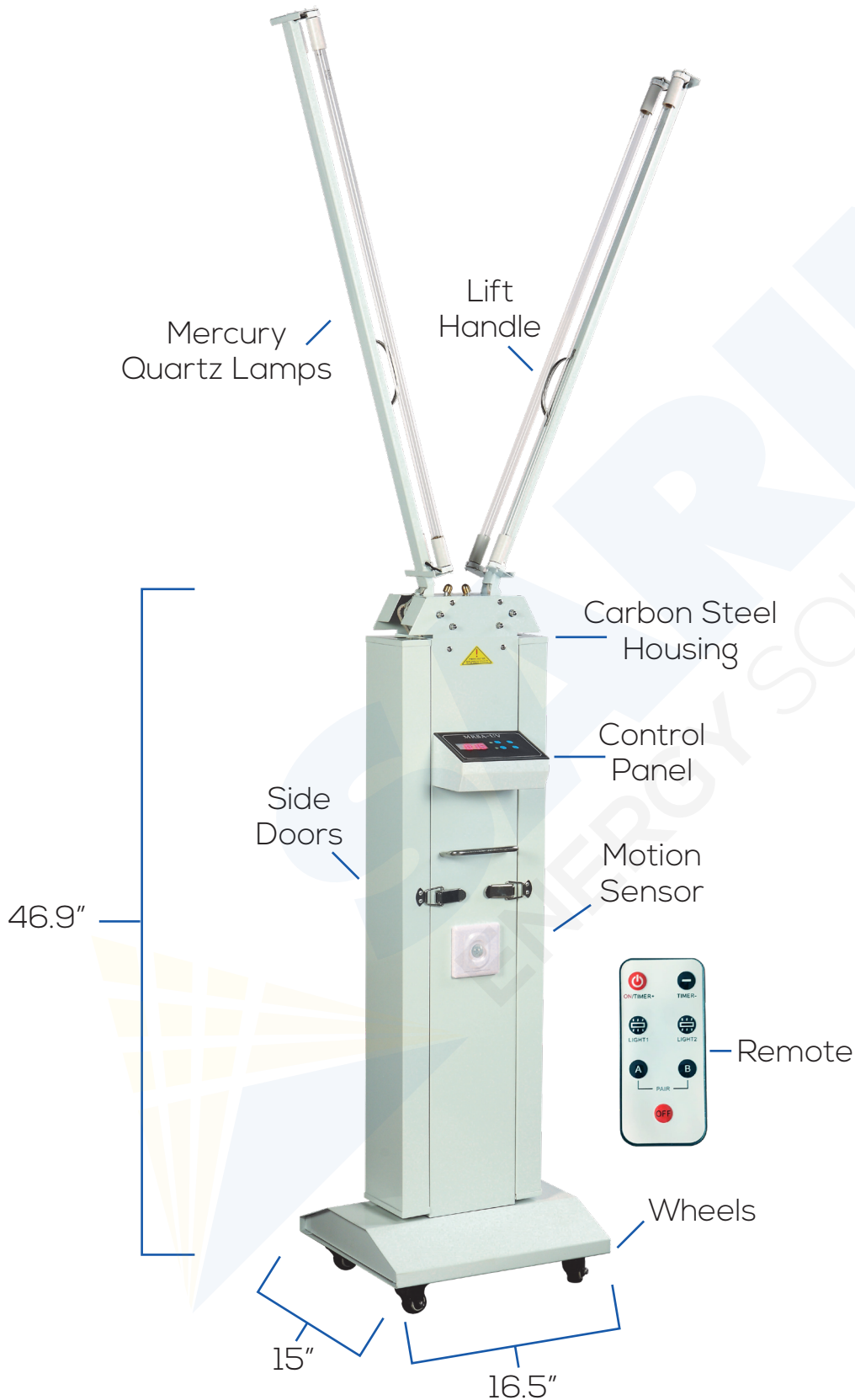
Algae



Amoebas



Allergens



FEATURES

1. Clinically proven to eliminate 99.9% of all viruses, bacteria, fungi, mold, yeast, algae, amoebas, and other germs and allergens within seconds of 253.7 nm UVC exposure.
2. Can be programmed and timer set with panel or remote control.
3. A motion sensor deactivates the lamp when it detects movement within 16 feet.
4. Two arms can be folded and adjusted to 30-180° angles. (Activate one or both arms)
5. Contact-free disinfection reduces the chance of human error and cross-contamination.
6. Reduces the need to buy and handle corrosive cleaners. (Does not replace soap/water)

SPECIFICATIONS CE

Model:	Mobile UVC Sterilizer Unit XL
Size:	46.9"(L) x 16.5"(W) x 15"(D) 48.5 lbs
Power:	220W
Voltage:	AC110V
UV Strength:	≥592 μW/cm ² (at 3.5 ft)
Effective Range:	~1,500 ft ²
UVC Wavelength:	253.7 nm
UVC Lamp:	Mercury Quartz
Bonus Features:	Motion Detector, Remote
Bulb Lifespan:	≥6,000 hours
Remote Range:	100 ft



TIPS & SAFETY

- To maximize effectiveness, ensure the room to be disinfected is clear of debris
- Take care to avoid direct or prolonged exposure of UVC to skin and eyes
- Keep out of reach of children and pets, do not leave unattended while not in use
- Clear area of people, plants and animals
- Can be used near food, tests have not shown any loss in quality or nutrition
- Angle the arms for maximum exposure
- If the lamp breaks use a wet paper towel to clean up, and do not inhale
- As distance from a subject is increased, exposure time should be prolonged

INSTRUCTIONS

Ensure that the base is attached, open the side doors and lift each lamp arm to your desired angle. Then plug the cord into an outlet and ensure the area is clear of people and debris.

Area	Disinfect Time
~650 ft ²	30 minutes
~900 ft ²	60 minutes
~1200 ft ²	90 minutes
~1,500 ft ²	120 minutes

*Exposure time can be extended past 120 min to increase the kill rate from 99.9% to ~99.999% or to disinfect rooms larger than 1,500 sq ft.

Press the 'ON' button and set the timer between 15-1440 minutes.

This model is ideal for more populated places and can easily be operated by a novice. There is a delay once it is turned on, so it will not activate until the sensor does not detect anyone. If a person or small animal enters the space it will deactivate the unit temporarily until they leave. You can operate both arms at once or just one at a time with the "Lamp 1" and "Lamp 2" buttons.