



Patent Pending

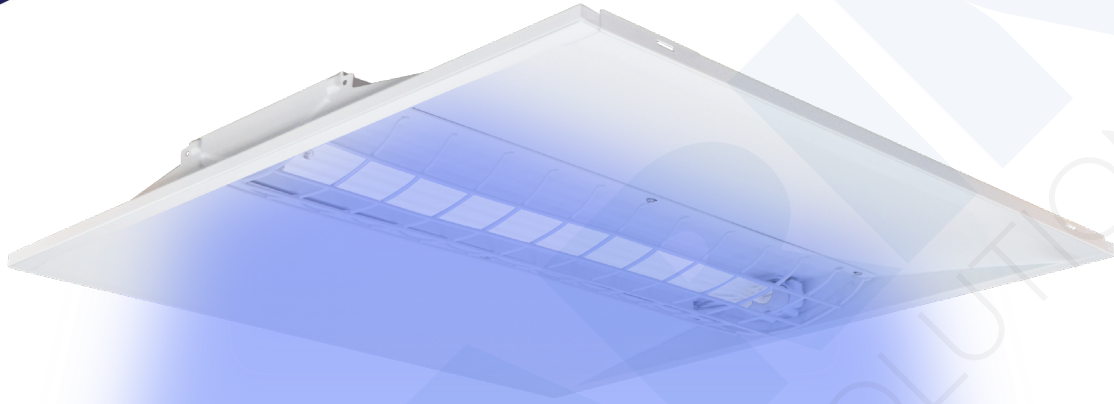
UVC Sterilization Troffer

Ultraviolet Disinfection Light Kills 99.9%
of Viruses, Bacteria, Fungi & More



Keep touch points safe for your visitors and staff.

Set yourself apart with a permanent disinfection fixture that helps protect your high traffic areas.



Excerpt from independent Microchem Laboratory test on a SARIN UVC device with the same bulb.

Test Microorganism	Contact Time	Carrier Distance	Replicate	CFU/Carrier	Average CFU/Carrier	Percent Reduction Compared to Control at Time Zero	Log ₁₀ Reduction Compared to Control at Time Zero
<i>E. coli</i> ATCC 11229	Time Zero	N/A	1	7.20E+07	6.05E+07	N/A	
			2	4.90E+07			
	15 Minutes	1 meter	1	<1.00E+01	<1.40E+02	>99.9998%	>5.64
			2	2.70E+02			
	20 Minutes	2 meters	1	2.00E+01	<1.50E+01	>99.99998%	>6.61
			2	<1.00E+01			
<i>S. aureus</i> ATCC 6538	Time Zero	N/A	1	1.43E+07	1.21E+07	N/A	
			2	9.90E+06			
	15 Minutes	1 meter	1	2.20E+02	6.55E+02	99.995%	4.27
			2	1.09E+03			
	20 Minutes	2 meters	1	3.40E+02	5.15E+02	99.996%	4.37
			2	6.90E+02			
MS2 Bacteriophage ATCC 15597-B1	Time Zero	N/A	1	7.20E+05	6.75E+05	N/A	
			2	6.30E+05			
	15 Minutes	1 meter	1	1.36E+03	1.44E+03	99.787%	2.67
			2	1.51E+03			
	20 Minutes	2 meters	1	1.70E+03	1.90E+03	99.72%	2.55
			2	2.09E+03			

Disinfects in 15-60 Minutes

Benefits of UVC Sterilization



Highly effective in killing every known microorganism (including coronavirus strains) and shown to reduce viral illness rates.



Boost morale by creating a protected environment—not just for workers—but anyone who enters your facility.



Save money with an alternate option to COVID-19 packages with recurring costs and non-quantifiable results.



Safe for the environment and humans with light naturally emitted from the sun, does not disperse mysterious chemicals.



Get all advantages UVC has to offer without adding more work, just activate the troffer with the push of a button.

UVC Disinfection

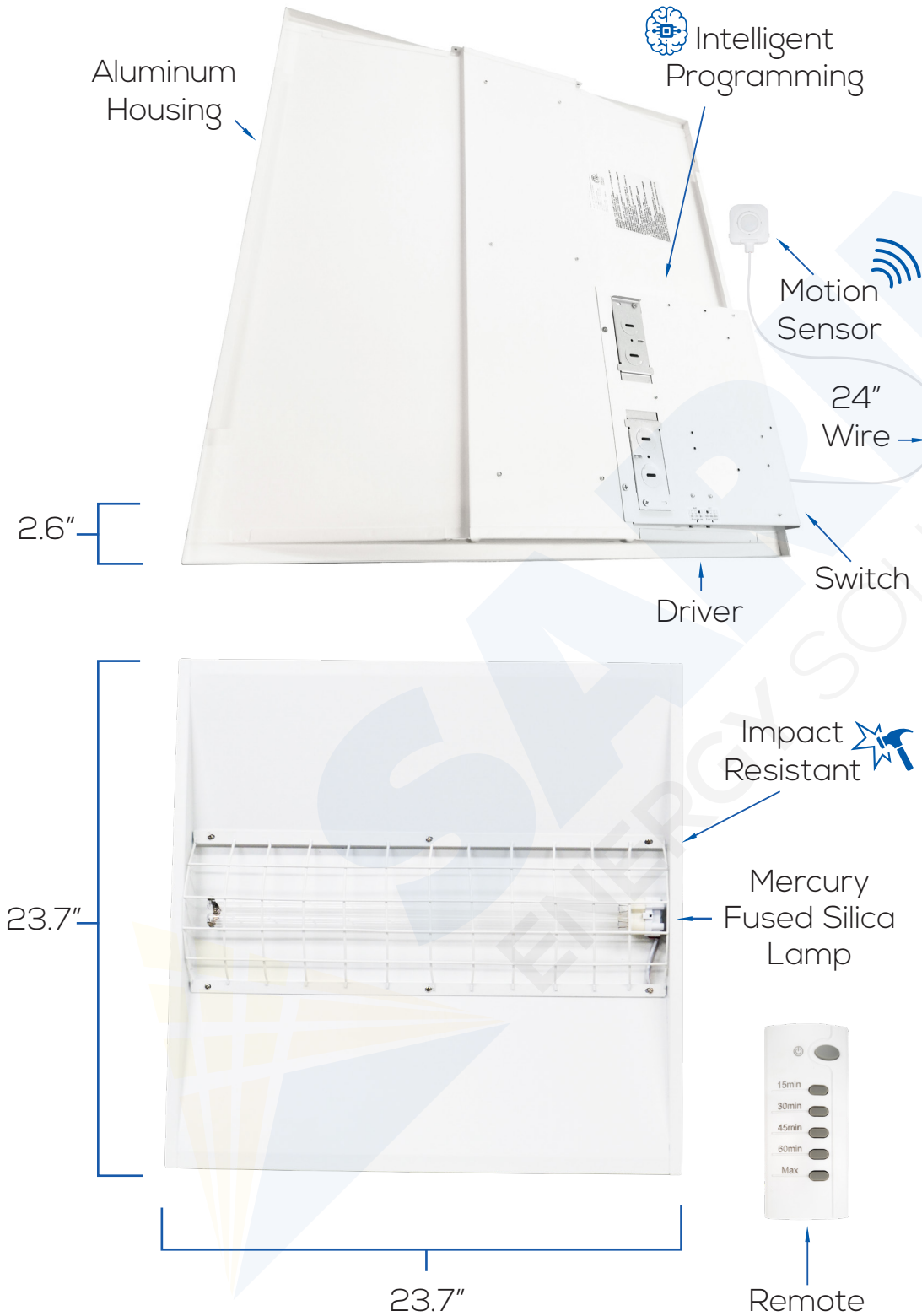
VS

Chemical Cleaners

Hypoallergenic and safe	✓	RESIDUE	✗	Leaves toxic irritants behind
Effortless once installed	✓	EFFORT	✗	Requires manual labor
Run automatically with remote	✓	FREQUENCY	✗	Dependent on a worker
Effective every single time	✓	ERRORS	✗	Prone to cross-contamination
No recurring purchases	✓	COST	✗	Buy materials frequently
8,000+ cycles per bulb	✓	UPKEEP	✗	Constant maintenance
Works against all microbes	✓	EFFECT	✗	Must include correct biocides
Environmentally friendly	✓	NATURE	✗	Chemical storage and waste

UVC Sterilization Troffer

Troffer: #11029 SES-UVCTR-55
Transceiver: #11030 SES-UVCTR-Z



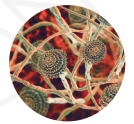
UVC Kills



Viruses



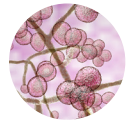
Bacteria



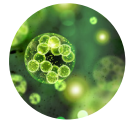
Fungi



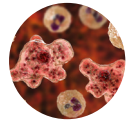
Mold



Yeast



Algae



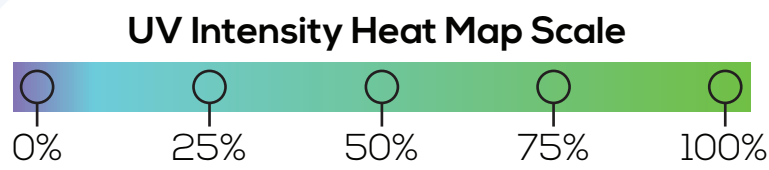
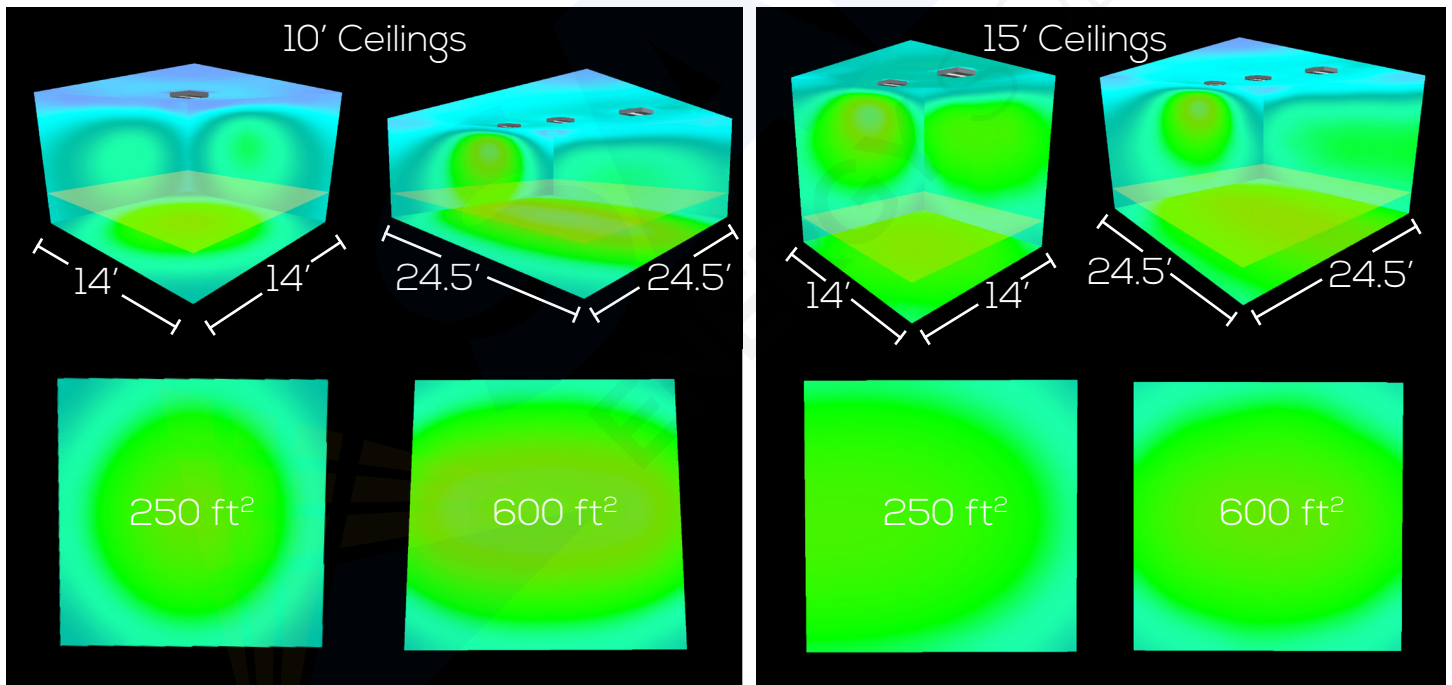
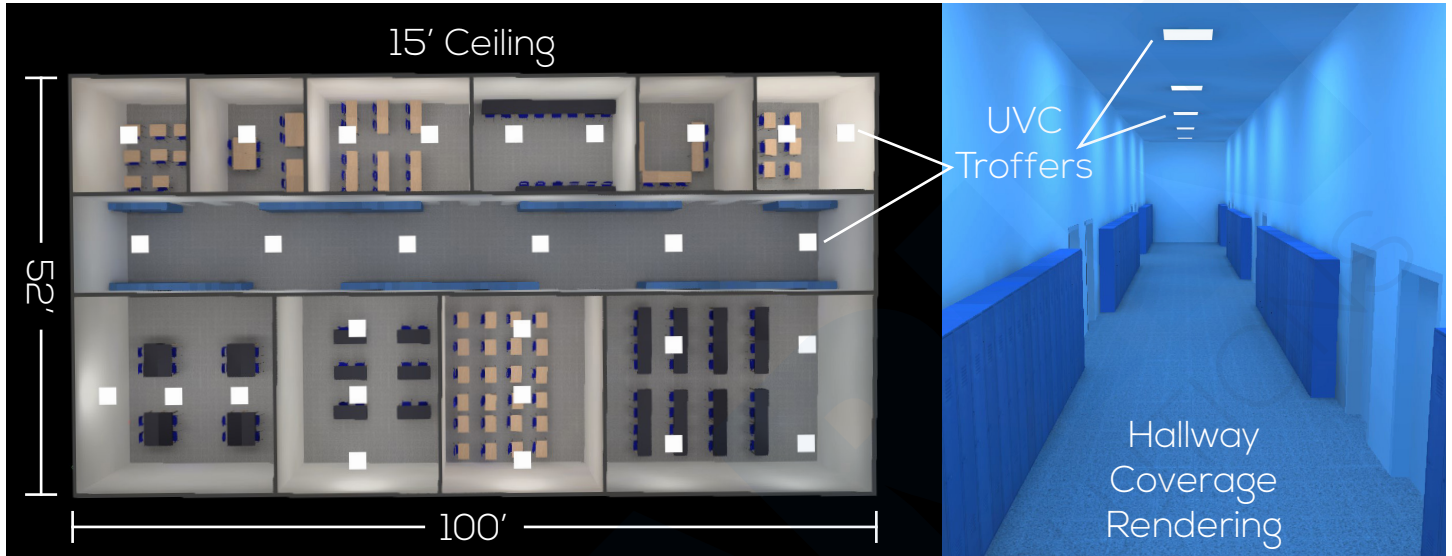
Amoebas



Allergens

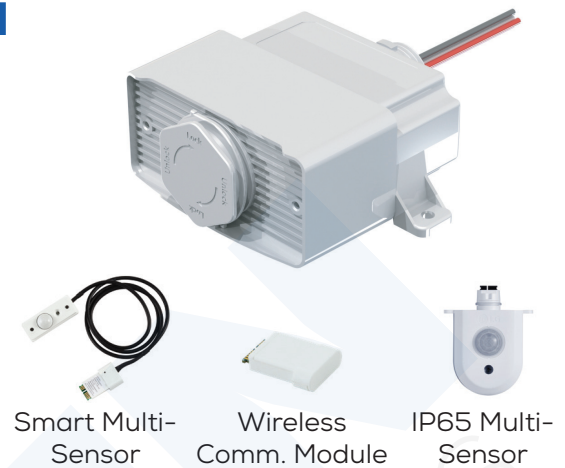
UVC LIGHT FIELD SCHOOL SIMULATION

This set of renderings illustrates the sterilization fixture coverage, light distribution and relative ultraviolet intensity. Two ceiling heights were applied in this study for a variety of rooms based on common classroom and hallway sizes.

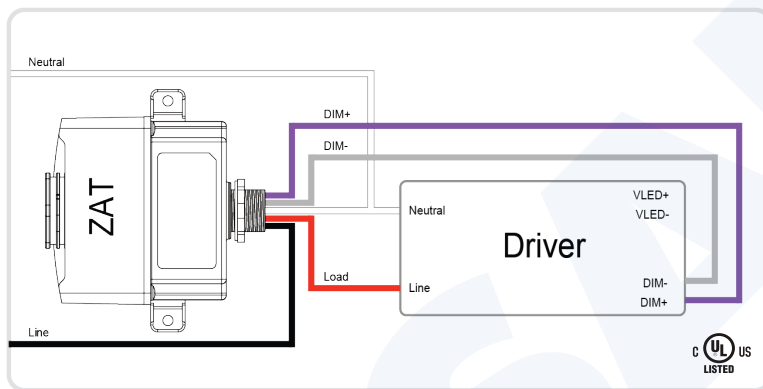


ENTERPRISE PROGRAMMING OPTION

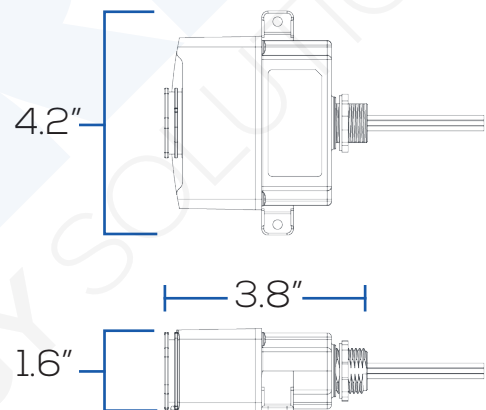
- Applied Internal Load Switch to control AC main On/Off
- Integrated AC-DC supply for stand-alone operation
- Supports 1-10V Dimming
- 2.4GHz ZigBee® Transceiver
- Embedded antenna for easy installation and low cost
- Flexible platform to accommodate diverse protocols
- Supports RCA SENSOR CONNECT, Daintree Networks® and ControlScope® systems



WIRING DIAGRAM



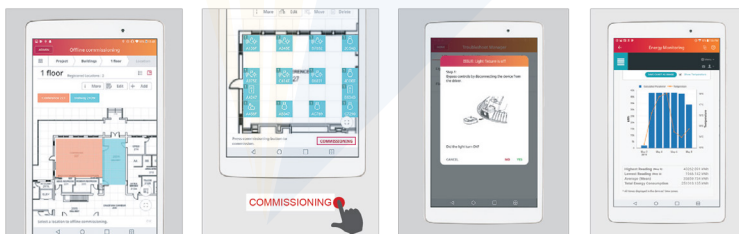
DIMENSIONS



RCA SENSOR CONNECT APP

The mobile app makes commissioning easy. Create lighting groups, optimize energy savings, monitor energy consumption, and control aesthetics with scenes to help building managers easily maintain lighting groups.

- Floor plan image registration
- Graphical map for lighting assignment
- Convenient methods for light registration
- More than 10,000 lighting control groups can be configured
- Occupancy sensor timeout and motion sensitivity adjustment
- Runs firmware updates
- Support for remote commissioning via screen sharing
- Energy monitoring, data analytics, reporting, and scenes



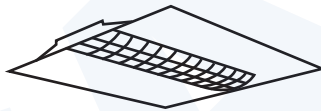
Graphical Map 1-Button Commissioning Troubleshooting Manager Energy Monitoring

FEATURES

1. Clinically proven to eliminate 99.9% of all viruses, bacteria, fungi, mold, yeast, algae, amoebas, and other germs and allergens within seconds of 253.7 nm UVC exposure.
2. Can easily be programmed and set with remote control.
3. A 360° motion sensor deactivates the lamp when it detects movement within 16 feet.
4. Contact-free disinfection reduces the chance of human error and cross-contamination.
5. Hypoallergenic sanitizing does not leave irritants or toxic chemicals behind.
6. Reduces the need to buy and handle corrosive cleaners. (Does not replace soap/water)

SPECIFICATIONS (ETL, FCC Pending)

Model:	UVC Sterilization Troffer
Size:	23.7"(L) x 23.7"(W) x 2.6"(D)
Power:	55W
Voltage:	AC90 - 100V
UV Strength:	≥253.1 μW/cm ² (at 3.5 ft)
Effective Range:	~15 ft
IP Rating:	IP20
UVC Wavelength:	253.7 nm
UVC Lamp:	Mercury Fused Silica
Bonus Features:	Motion Detector, Control
Bulb Lifespan:	≥8,000 hours



TIPS & SAFETY

- To maximize effectiveness, ensure the room to be disinfected is clear of debris
- Take care to avoid direct or prolonged exposure of UVC to skin and eyes
- Extend disinfection time if your room temperature is above 104° F or below 68° F to ensure adequate exposure
- Clear area of people, plants and animals
- Can be used near food, tests have not shown any loss in quality or nutrition
- If the lamp breaks use a wet paper towel to clean up, and do not inhale
- As distance from a subject is increased, exposure time should be prolonged

INSTRUCTIONS

This UVC Sterilization Troffer is designed as a permanent way to keep an area safe and germ free. Simply clear the room and set the timer with your remote, then allow it to run a 15–60 minute cycle depending on number of units and ceiling height. If anyone approaches within 16 feet of the fixture during disinfection it temporarily deactivates until motion is no longer detected, then it turns back on to finish the cycle. A button on the driver box toggles between remote and on/off light switch operation.

Remote Operation:

1. Install in drop ceiling and connect power.
2. Press "Power" button on the remote.
3. Select your duration using a time button.
4. After a 10 second delay the light activates.

Motion Sensor:

This activates 20 seconds after the lamp is switched on. When motion is detected within 16 feet the light will turn off, then turn back on after 20 seconds of no motion.